

# THE BOSTON BRACE

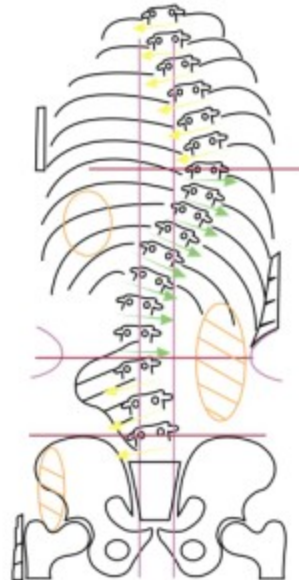
*Originality Delivers The Best*



## FOR THE NON OPERATIVE TREATMENT OF IDIOPATHIC SCOLIOSIS

The Boston Scoliosis Brace is globally recognized as the premier system for the non - operative treatment of idiopathic scoliosis. The Boston Scoliosis Brace which is in existence since 1970, is accepted as the primary orthotic solution at most of the hospitals by the renowned medical practioners.

Each brace is custom-fitted by cast or measurement and made of non-cracking orthopaedic -grade polymer with a hypo-allergenic polyethylene foam liner for unsurpassed comfort.



Prefabricated symmetrical modules of Boston Brace System are available in a large number standard sizes. There are many advantages of such a standardised system, but perhaps, of most importance is the fact that a symmetrical module will tend to correct the asymmetric spine toward normal and this is at the very heart of the principle of the system.

Each individual Boston Brace is constructed according to a basic set of principles. By consistently using these principles, we have proven that braces of the highest caliber will be constructed.



**endolite**  
get busy living

E-mail : [endolite@vsnl.com](mailto:endolite@vsnl.com)

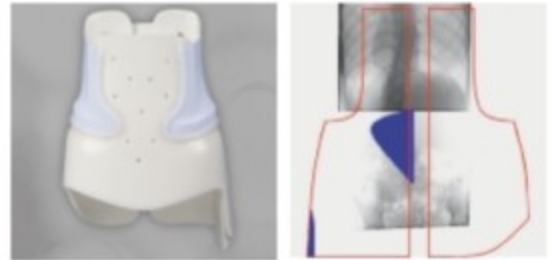
Website : [www.endoliteindia.com](http://www.endoliteindia.com)

# THE BOSTON BRACE

The goal of Brace Design is to convert a prefabricated module into an individual orthosis fabricated for the specific needs of one patient. This is achieved through the "Blueprint" process where an x-ray of the patients spine is evaluated and measured (using the Cobb method) which in turn allows the Orthotist to decide the correct placement of pads, trim lines, etc. The brace Blueprint is the guide for choosing and constructing the proper brace to treat each type of scoliosis. The brace is named according to the highest curve being treated by the brace.

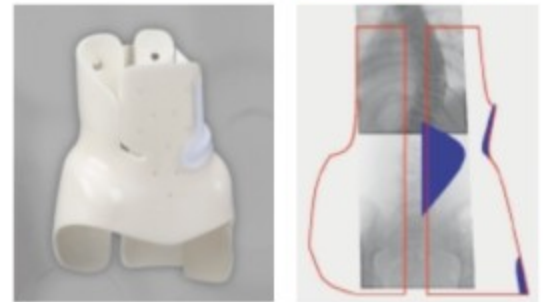
## Lumbar Brace

The lumbar Brace is used for curvatures with an apex below L1 or Lumbosacral curves. The module usually requires a lumbar pad on the convexity of the curve with a trochanter extension / pad on the same side as the lumbar pad.



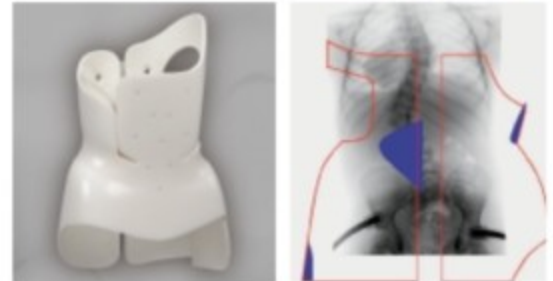
## Thoraco-Lumbar Brace

This brace is used for single curves with apex at T10 to L1 or double curves with a flexible upper thoracic curve, the upper half of which will not be braced. This module usually requires a lumbar pad and trochanter extension / pad on the convex side of the lower curve with a low thoracic extension / pad on the opposite side.



## Thoracic Brace

The Thoracic brace is used for curves with apex at T6 to T10 or double curves. This module usually requires a thoracic extension / pad on the convex side of the thoracic curve, lumbar pad on the opposite side and an axillary extension also on the opposite side to the thoracic extension.



## Evidence Based Medicine

The Boston Brace system is the most widely studied and proven orthosis among the different approaches to the non-operative treatment of idiopathic scoliosis. Many studies over the years have shown and proven its effectiveness. It is accepted that brace treatment can alter the natural history of moderate Idiopathic Scoliosis and the Boston Brace System has been at the forefront of conservative treatment for over 30 years. We are proud of being the supplier of this system and in order to ensure that your patients are fitted with an original, always look for the "Original Boston Brace" mark in the abdominal area of the module.

For more details and to view abstracts, please visit [www.endoliteindia.com](http://www.endoliteindia.com)



endolite  
get busy living

E-mail : [endolite@vsnl.com](mailto:endolite@vsnl.com)

Website : [www.endoliteindia.com](http://www.endoliteindia.com)